

**“Gudi”** is your partner in creative solutions for acoustical problems. We have wide range of comprehensive solution for every environmental and indoor acoustic.

**Sonic Armour Acoustic Doors (AD)** included the proprietary Acoustic Doors in Exterior/Indoor application & its accessories.

**Standard Doors Dimension:** 900 x 2100mm (single leaf), 1500 x 2100mm (double leaf)

**Panel Thickness:** 45 - 90mm

**Acoustic Performance:** STC 38 – 55

**Finish Selection:**

Powder Coating in RAL/Pantone series

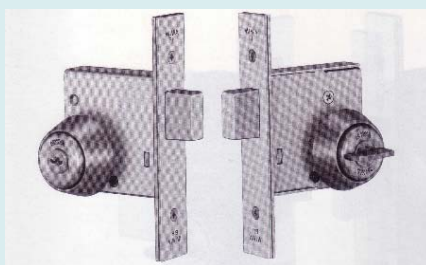
Painting finish to fit door schedule

Veneer / Plastic Laminated Sheet / ECO Melamine Paper.

**Accessories:** Door Lock / Closer / Ironmongeries to fit project specification.

**Fire/Smoke Properties:** 2 hours in accordance with BS476 Part 22 & 31 / EN 1634 (upon request)

**Vision Panels / Glazing:** 5 – 10% of door panels' dimension (option), or a STC39 glazing acoustic door.



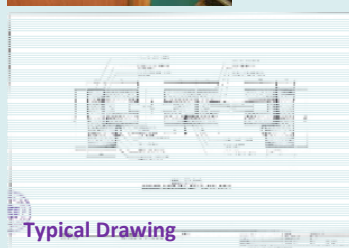
Flexibility for selection of Ironmongeries



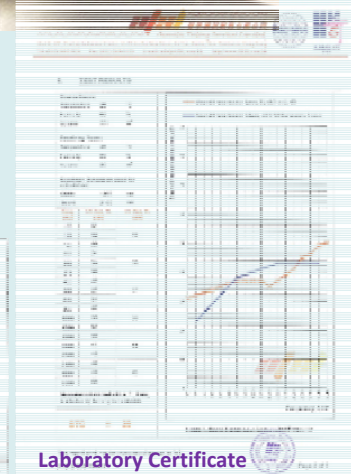
Acoustic Timber Doors



Acoustic Metal Doors



Typical Drawing



Laboratory Certificate



STC39 Acoustic Glaze Doors

**APAC**  
BUILDING ACOUSTICS

**APAC Building Acoustics Limited**

Room 802, Shatin Galleria, 18-24 Shan Mei Street

Fotan, N.T., Hong Kong

Tel: (852) 2786 5900

Fax: (852) 2786 5728

E-mail: [info@apacba.hk](mailto:info@apacba.hk)

